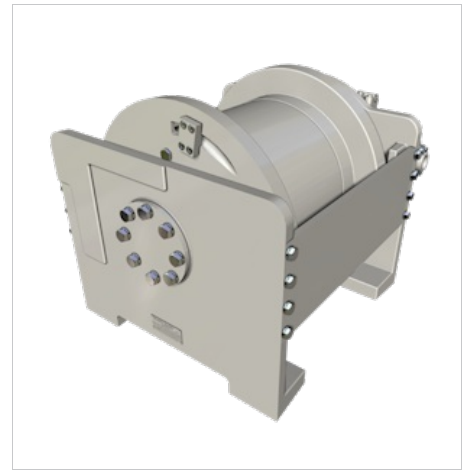


BRADEN

RW300A-SPL-69V098/057-01 *

Features and Benefits

- Overrunning clutch
- Rugged and compact design
- Sealed, high-efficiency planetary reduction gearing for continuous-duty performance
- Tension roller kit to help prevent spooling issues (available on some units)



Line Pull	Unit Weight
40000lbs	1350lbs
18143kg	612kg

Performance

	Imperial	Metric
Ratio	69.300:1	
Motor Displacement	9.760 ci	160.0 cc
Pressure	4127 psi	285.0 bar
Winch Flow	98 gpm	371.0 lpm
Rope Diameter	0.8750 in	22.3 mm
Cable Capacity	137 in	41 mm

Layer	Line Pull (lbs)	Line Speed (fpm)	Line Pull (kg)	Line Speed (mpm)
1	40000	137	18144	42
2	36080	152	16366	47

The last legal layer per ANSI is 2
D/d = 18:1

Applications for MODEL RW300 RECOVERY WINCH

- Oilfield

Resources:

[Sales - LIT2443](#)

[Service - PB-223](#)

[Service - LIT2231](#)

[Material List - LIT2095](#)